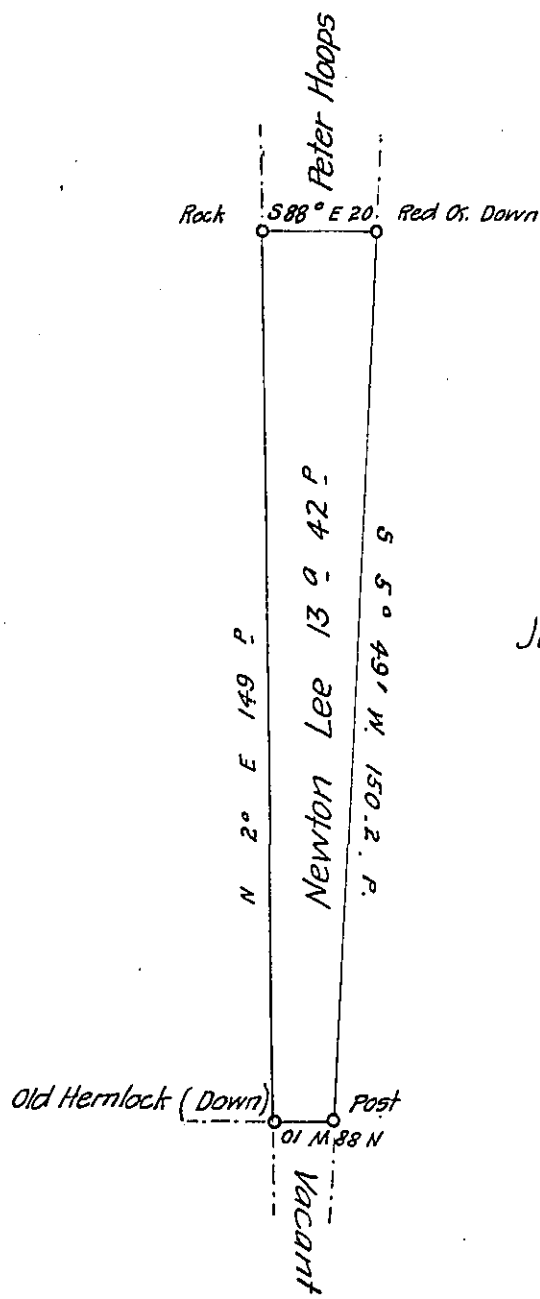


John Rupert

John Stone



A Draft of a tract of land situated in the Township of Burri-  
 side and County of Clearfield containing Thirteen acres forty two perches  
 and allowance of six per cent for roads, etc. Surveyed the Fourteenth day of  
 September 1896 in pursuance of a warrant granted to Newton Lee  
 dated the eighteenth day of August 1896

Thomas W. Moore

County Surveyor

To James W. Latta, Esq.

Secretary of Internal Affairs

IN TESTIMONY that the above is a copy of the original remaining on file in  
 the Department of Internal Affairs of Pennsylvania, made  
 conformably to an Act of Assembly approved the 16th day of  
 February, 1833, I have hereunto set my Hand and caused  
 the Seal of said Department to be affixed at Harrisburg,  
 this ninth day of November 1905

*George J. Ross*  
 Secretary of Internal Affairs.